

CUSTOMIZE YOUR SOLUTION WITH SAFRAN ENTERPRISE DEVELOPER

Safran Enterprise Developer is a powerful application development toolset that allows businesses to design and customize sophisticated project planning and control systems to help manage their businesses. It offers a wide range of features designed specially to support project management application development.



Now customization of reports, charts and table graphics, periodic aggregation, date and calendar based calculations, network time analyses, resource scheduling and more are at your fingertips with Safran Enterprise Developer.



Providing an integrated enterprise development solution that fills the gap between the application development tool and the project management application, Safran Project and Safran Enterprise Developer integrate seamlessly into one system and deliver the best of both worlds: the simplicity and power of the most advanced project management "out of the box" solution today and a development toolset that provides users with the flexibility to meet individual preferences as necessary.

OVERVIEW

Safran Software solutions commitment to delivering powerful solutions to the Project Management arena has led to the creation of the Safran Enterprise Developer tool set. Safran Enterprise Developer addresses the needs of the application developer who is faced with the challenge of building and customizing project management applications.

Safran Enterprise Developer provides powerful integrated project management functions such as:

- Aggregate
- Bar chart editor
- Bar chart graphics
- Chart and table graphics
- Combined XY and bar chart graphics
- Date and Calendar arithmetic and functions

Safran Enterprise Developer is designed to allow professional developers to easily build or customize sophisticated applications that provide an integrated solution to business and project requirements. Together with Safran Project it ensures maximum flexibility.

The structure of Safran Enterprise Developer allows you to build and deploy corporate, project or even site specific code and seamlessly integrate this with your Safran Project Enterprise Solution.

BUILDING SOLUTIONS TO MEET EXPLICIT DEMANDS

Safran Enterprise Developer enables development of solutions to meet explicit demands of the end-user. The ability to structure the solution and develop tailor-made applications helps companies meet their business requirements.

Safran Enterprise Developer provides the ability to change the application to meet changing demands of the organization. The ability to structure your solution ensures the right information is provided to the right people, creating a strong and visible control system.

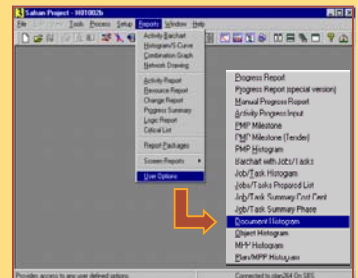
BUILDING STAND ALONE APPLICATIONS

You can build your own stand-alone applications using the Safran Project API without the worry of saving incorrect calculations or data.

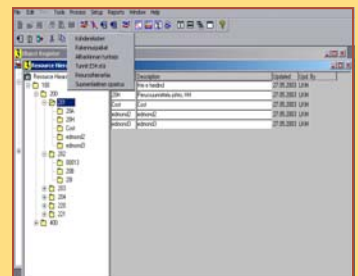
BUILDING CORPORATE ADD-ONS

Developers can create customized windows, user-objects data windows, reports and more and add these to the local libraries and included as options to their version of Safran Project. Different versions of the customized code may be deployed to meet specific site or project requirements.

Safran Enterprise Developer allows you to build and deploy corporate, project or even site specific code and seamlessly integrate with your Safran Project solution.

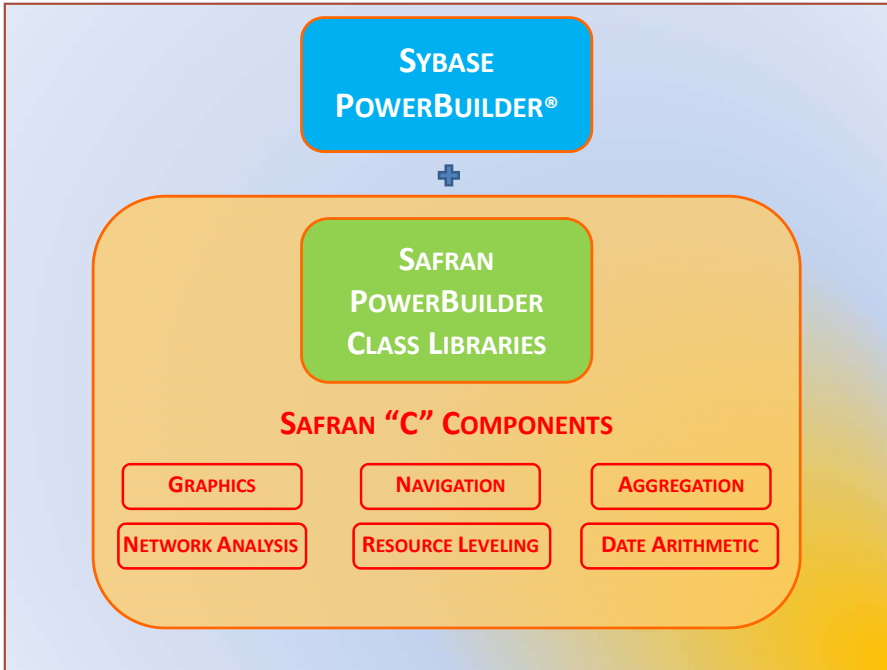


Our development interface allows you to determine the level of integration between your Safran products and any third party system that holds vital information for project-focused management.



Good system integration is vital if you want to take advantage of best-in-market business applications without worrying about delays and missed opportunities caused by stove-piped systems.

At the core of our development is the continuous effort to reduce software complexity and increase customer value. Safran Enterprise Developer allows the user to customize the project management environment to fit organizational needs.



A POWERFUL APPLICATION DEVELOPER AT YOUR FINGERTIPS

Safran Enterprise Developer installs and configures Safran's PowerBuilder class libraries. Combined with Sybase PowerBuilder access is provided to the Application Program Interface (API) of these class libraries to develop customized solutions based on Safran's business logic "C" components. The Safran business logic components are the engines that control major application functions such as network analysis, CPM calculations, graphics and reports, navigation and date arithmetic. Safran Enterprise Developer manages the interface to the database to ensure data is stored and calculated correctly. This substantially lowers the risk of faulty data coming in, while maintaining the integrity of Safran Project's user interface.

SYSTEM REQUIREMENTS

To utilize Safran Developer objects it is necessary for you to have obtained a license for Safran Project Enterprise. Use of this software item also requires the use of the appropriate version of PowerBuilder. Other system requirements are identical to those of Safran Project Enterprise.



Safran

SAFRAN NORTH AMERICA

simple | flexible | powerful

2132A Central Avenue SE #253 | Albuquerque, NM 87106
Phone: 505.265.2229 | Fax: 505.265.0229 | www.safranna.com

© SAFRAN SOFTWARE SOLUTIONS AS, ALL RIGHTS RESERVED.
ALL OTHER TRADEMARKS MENTIONED HEREIN ARE THE PROPERTY OF THEIR RESPECTIVE OWNERS

OTHER SAFRAN SOLUTIONS

Safran provides a complete approach to planning and project management and control:

SAFRAN PROJECT

An advanced, high-capacity, high performance project planning and control system aimed at the professional project management community.

Safran Project is fully integrated with the companion products Safran Details and Safran Enterprise Developer. Together they offer a powerful environment for the development of custom planning and control applications of almost limitless scope.

SAFRAN DETAILS & DETAILS DEVELOPER

A powerful toolset for integration of low level planning and project performance items.

SAFRAN FOR MICROSOFT PROJECT

Adds powerful performance measurement features and earned value reporting to Microsoft Project®. Safran or Microsoft Project is fully integrated into and works directly within Microsoft Project®.

SAFRAN PLANNER

Combining simplicity with power, Safran Planner offers planning and scheduling features to both occasional and daily users without being complicated. Safran Planner is designed to simplify the task of planning and scheduling without adding frustrating complexity for novices, occasional planners or professionals.